

Music Toolkit FAQ

For the latest version of this document please go to www.2simple.com> support > technical questions

Sound Problems

Q: I can't get sound working on my computer

Q: There is no sound in 2Explore / 2Beat / 2Sequence

Q: There is no sound in 2Play / 2Compose / 2Synthesise

Q: Error when trying to open 2Play / 2Compose / 2Synthesise – “Change to autowait...”

Q: I changed the MIDI device in 2Play as you suggested, but 2Compose closes before I have a chance

Saving

Q: “Sorry. This file could not be saved here” when saving

Q: When I try save my work, the program defaults to C:\Program Files... instead of My Documents

Q: I press save but am not able to choose which folder to save to

Q: How do I change the default save and open folder?

Saving as WAV or MIDI

Q: Can I save files in a standard music format?

Q: How do I save as Wav or MIDI?

Q: The sound plays back ok in the program, but when I save it as a WAV file, it is silent – or the wav file records my voice as well as the music? (2Explore / 2Beat)

Q: 2Sequence has no option to save as a standard music file format?

General

Q: The Mute button always seems to be on

Q: My keys keep sticking down & playing continuously

Q: I double-click on a saved Music Toolkit file and it opens the program but not the file itself

Q: Can I add my own sounds in Music Toolkit?

Q: Can I use the keyboard only when using Music Toolkit?

Sound Problems

Q: I can't get sound working on my computer

- 1) First check that other programs (not related to 2Simple) work with sound on your computer.
- 2) Another good test is to try play the videos which accompany the Music Toolkit.
- 3) If you don't get sound, check that you have your speakers plugged in to the computer and turned on.
- 4) Make sure your volume controls are all turned up. Pay particular attention to the “**master volume**” slider control, as well as “**sw synth**” for 2play, 2compose and 2synthesise, and “**wave**” for 2explore, 2beat and 2sequence.
- 5) If you still do not get sound with any program, your computer may not have sound set up correctly. Please report this to your technician.

Q: There is no sound in 2Explore / 2Beat / 2Sequence

A: These 3 modules use sound files in WAV format. Try the following :

- 1) Double-click on the speaker icon on the bottom right corner of your screen (If you do not see it, click Start >Control Panel >Sounds and tick "show volume control on taskbar")
- 2) In the window which appears, make sure all volume sliders are at maximum and none are muted out. Pay particular attention to the slider control entitled "Wave".
- 3) Additionally, click on "options" (on the top left corner of the sound control panel) and then "properties". The window which should appear allows you to display additional volume sliders which may not be displayed yet - to display all available volume sliders, make sure all the boxes are ticked, then click ok.
- 4) Do not get confused between sound controls for PLAYBACK and sound controls for RECORDING. Playback and recording have separate slider controls, and you can switch between them using options > properties.
- 5) If none of the above works, try double-checking Wav works on your computer :

- 1) Click Start - Programs - Accessories - Entertainment - Windows Media Player
- 2) Click File – Open and navigate to C:\Windows\Media and select a .wav file (such as "chimes")
- 3) Press play in Windows Media Player.
- 4) If you have a problem hearing this file, you need to look at how sound is set up on your computer as you should be able to hear it irrespective of whether 2Simple Music Toolkit is installed or not.

Q: There is no sound in 2Play / 2Compose / 2Synthesise

A: **Note that these 3 modules use MIDI technology and so will not work on a thin client system.** If you're not using a thin client system and still have this problem, changing the MIDI Device will usually fix this issue. (You need to have version 1.0.90 or later to do this. To check your version, look at the little pop-up window that appears when you launch any of the 6 music programs - on the top left will be the version number. If you do not have version 1.0.90 or later, contact 2Simple and we will send you a download link.) Open 2compose, go into the teachers options (ctrl + shift + O) and select "settings" tab. Change the MIDI device used. Each time you change the selection, it should immediately play the notes "C-D-E". If it does not do this, try select another MIDI driver, until you have one which works. You can also do this in 2play, and the MIDI Device setting you choose in 2play will affect 2synthesise also. If changing the MIDI Device does not fix the problem, try double-checking MIDI works on your computer :

- 1) Click Start - Programs - Accessories - Entertainment - Windows Media Player
- 2) Click File – Open, and navigate to C:\Windows\Media
- 3) Select a .mid file (NOT a .wav file) - for example Bach's Brandenburg Concerto No. 3
- 4) Press play in Windows Media Player.
- 5) If it works, you can play MIDI files on your computer - go back to 2play one more time and see if you get sound (sometimes you need to play a midi file first in Windows Media Player to "initialize" midi files, before it will work in 2play / 2compose / 2synth.)
- 6) If it does not work, your computer may have a problem with playing MIDI files. Please check how sound is set up on your computer or refer this problem to your technician.

Q: Error when trying to open 2Play / 2Compose / 2Synthesise – “Change to autowait...”

A: Refer to solution as described in the previous question.

Q: I changed the MIDI device in 2Play as you suggested, but 2Compose closes before I have a chance

- 1) Double-click My Computer and go to C:\Program Files\2Simple Software\Music Toolkit
- 2) Open the file "2mt.ini". This will open in notepad.
- 3) Under the [2play] section will be an entry "midiDriverNumber=..."
- you need to make the same entry for 2compose - add a line to the bottom of the file and type in "[2compose]" excluding quotation marks, including square brackets.
- 4) Under that line, add a second line with the same "midiDriverNumber=..." as for 2play
- 5) save the file and exit, then try 2compose again.

Saving

Q: “Sorry. This file could not be saved here” when saving

A: The program is trying to save to a location which it does not have permissions to. This location is probably C:\Program Files\2Simple Software\Music Toolkit, which is the default save location for Music Toolkit v1.0.90. Contact 2Simple for a download link of the latest version which defaults to the My Documents folder. Alternatively, you can edit the default save path with the version you already have – see below.

Q: When I try save my work, the program defaults to C:\Program Files... instead of My Documents

A: You most likely have an older version of the program installed. Contact 2Simple for a download link of the latest version which defaults to the My Documents folder. Alternatively, you can edit the default save path with the version you already have – see below.

Q: I press save but am not able to choose which folder to save to

A: Open the Music Toolkit. Go into the teacher options (ctrl + shift + the letter “o”) from one of the programs such as 2Play, select the GENERAL tab and click the button on the bottom right with 3 dots on it. Select STANDARD dialogs on the bottom left and click OK and OK again. You will need to repeat this for each of the 6 parts of the Music Toolkit. You may need to be logged in as administrator for this setting to be remembered. You’ll need to make this change on each computer (for more info, see www.2simple.com> support > networks > copying 2Simple settings across a network).

Q: How do I change the default save and open folder?

A: Open the Music Toolkit. Go into the teacher options (ctrl + shift + the letter “o”) from one of the programs such as 2Play, select the GENERAL tab and click the button on the bottom right with 3 dots on it. Navigate to the folder you want. You can also change the drive by clicking the down arrow on the right of where the drive is listed. Click OK. Once you have done this for 2play, it will also work for 2explore, 2beat etc. You may need to be logged in as administrator for this setting to be remembered. You’ll need to make this change on each computer (for more info, see www.2simple.com> support > networks > copying 2Simple settings across a network).

Saving as WAV or MIDI

Q: Can I save files in a standard music format?

A: Yes. 2Explore and 2Beat can save as a WAV file, and 2Play, 2Synthesise and 2Compose can save as a MIDI file. See below for more information about 2Sequence.

Q: How do I save as Wav or MIDI?

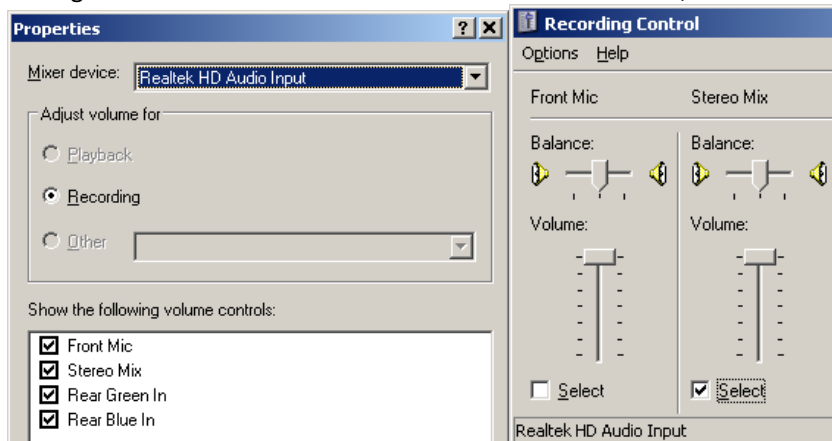
A: When you click save, you should get a tickbox to save as wav (in 2Explore and 2Beat) or as midi (in 2Play, 2Synthesise and 2Compose). This is if you have SIMPLE save dialogs enabled (simple save dialogs show a simplified window which does not allow browsing to different folders.) If you have STANDARD save dialogs enabled, there will be no tickbox but you can choose to export as wav or midi by clicking on the “save as type” dropdown. If no wav or midi option shows in the dropdown, you need to get the latest version from 2Simple – please contact us for a download link. If you want to switch between simple and standard dialogs, open the teacher options (press ctrl + shift + the letter “o” – not from the launcher but from one of the 6 programs, such as 2Play) and click the General tab and then the button with the 3 dots on the bottom right.

Q: The sound plays back ok in the program, but when I save it as a WAV file, it is silent – or the wav file records my voice as well as the music? (2Explore / 2Beat)

A: [Make sure to record sound from the computer and not the microphone:](#)

Windows XP

Double-click the speaker icon on the bottom right corner of your screen (If you do not see it, click Start > Control Panel > Sounds and tick "show volume control on taskbar"). Click Options > Properties and make sure you have RECORDING selected (If it is greyed out, you may need to change the mixer device from the dropdown at the top). Make sure all the boxes at the bottom are ticked and click OK. You should now see the “Recording Control” window. Make sure “Stereo Mix” is selected, and NOT microphone.



Now re-open one of the Music Toolkit files, then save as a WAV file again.

Windows 7:

1. Right click on the audio icon in the task tray
2. Choose "recording devices"
3. Right click and ensure there is a tick in the box which says "Show disabled devices"
4. Stereo mix should now appear (if it does not appear, you may need to update your sound card driver. Speak to your technician for help with this.)
5. Right click Stereo mix and press "Enable"
6. Right click Stereo mix again and press "Set as default device"
7. Now re-open one of the Music Toolkit files, then save as a WAV file again.

Q: 2Sequence has no option to save as a standard music file format?

A: Unfortunately it does not. The only current workaround (which is quite technical and not recommended for pupils) is as follows:

1. Make sure to record sound from the computer and not the microphone (see previous question for how to do this)
2. Create or open your 2Sequence file.
3. Click Start > Programs > Accessories > Entertainment > Sound Recorder.
4. Press the red circle to start recording, and then quickly switch to the 2Sequence file and press play. When the file has finished playing, switch back to the sound recorder and press stop (holding down ALT and pressing TAB is one way to quickly switch between open applications)
5. In Sound Recorder, click File > Save to save as a wav file.

General

Q: The Mute button always seems to be on

A: The speaker icon with the red cross through it that appears on some of the Music Toolkit programs does not actually indicate that sound is not working or that sound is disabled on your computer. The icon is in fact a button which allows you to stop music from playing when you are in the middle of using the program.

Q: My keys keep sticking down & playing continuously

A: This is actually an intentional feature called "drone notes" or "sticky keys". What really happens is if you click down with your mouse onto a key and then move off the key before you click up, the key will stick down and play continuously. If you click down & up without moving the mouse from the piano key, it should not hang. It was designed this way to enable a user to play multiple notes using the mouse only. It should not happen if you use your keyboard, and also pressing the "no sound" button (speaker with a cross through it) at the top right should "lift up" all down keys and stop any hanging sounds.

Due to customer feedback, the current version of the Music Toolkit allows this feature to be disabled through the Teacher Options (Ctrl-Shift-O). Please contact us if you have an older version and would like this feature.

Q: I double-click on a saved Music Toolkit file and it opens the program but not the file itself

A: You need to open up saved files using the OPEN button within the Music Toolkit. This program does not support opening files by double-clicking them from outside the program.

Q: Can I add my own sounds in Music Toolkit?

A: You can add sounds to 2Explore, 2Sequence and 2Synthesise, and you can change sounds in 2Beat. You can only do this with WAV files

- **2Explore:** Go to the location where you have installed the Music Toolkit - by default C:\Program Files\Music Toolkit\. Go into the GROUPS subfolder. You will see a number of subfolders, each representing one option when you press NEW from within 2Explore. You can create additional folders which will also be displayed in this way. All you need in the folder is 6 WAV files named 1 to 6, as well as 2 BMP files per WAV file - one for "off" and one for "on" - (the picture will change when you click your mouse on it within 2Explore.) Take a look at the existing folders to see how this

is done.

- **2Sequence:** - Go to the location where you have installed the Music Toolkit. Go into the SEQ subfolder. You will see a number of subfolders, each representing a different group within 2Sequence. Simply add a new WAV file and a BMP file with the same name to any of these folders, and 2Sequence will pick this up automatically. Don't create a new folder. (Additionally, if you record something in 2Synthesise, it should automatically show up in the My Sounds folder of 2Sequence.)
- **2Synthesise:** Scroll the music instrument panel to the right until you get to the SAMPLE button in the OTHERS category. Click on sample and browse to your saved WAV file. Select the file and click open. Hold a note down with the keyboard or mouse to play the file.
- **2Beat:** Sounds cannot be added but you can replace existing beats in the DRUMS folder with any other WAV file.
- **2Compose:** Add sounds by adding BMP files to the MIDI folder with name of instrument and midi number. This is an advanced option.

Q: Can I use the keyboard only when using Music Toolkit?

A: To a limited extent, yes. See the Switch Access section of the General FAQ in www.2simple.com> support.

2Simple Software
support@2simple.com
020 8203 1781
Last updated 12 July 2010